

The White Hart and Mill Bourne, Chobham, Surrey



Moderate Terrain

3.5 miles
Circular
1.5 to 2
hours

190515



Access Notes



1. The walk is almost entirely flat and the paths cross a mixture of grass meadows, paddocks, pastures and woodland and so can be very muddy in winter and after periods of rain.
2. There are several gates plus six stiles (two of these are entirely enclosed by wire fencing so dogs may need a lift over). There is one section of road walking along a quiet lane so take care with children and beware of any traffic.
3. Two of the fields you cross are likely to be holding grazing sheep and cattle so take care with dogs.

The White Hart is believed to date from the 1500s, and is one of the oldest properties in the village.

A 3.5 mile circular pub walk from the White Hart in Chobham. During the recent renovation, great pains were taken to preserve the character of such a venerable old hostelry, which is now revived and refreshed. The walking route follows the southern bank of the Mill Bourne through pleasant water meadows giving open views and a chance to see lots of meadow flowers and perhaps even a kingfisher. The return leg crosses horse paddocks and grazing pastures to join an ancient lane back to the village.

Getting there

Chobham is situated in the north west corner of Surrey, a few miles north of Woking. The walk starts and finishes from the White Hart pub on the High Street. There is a car park directly alongside the pub which is accessed via a narrow alleyway between tall buildings.

Approximate post code **GU24 8AA**.

Walk Sections



Start to Mill Bourne



Leave the car park and turn right along the High Street. At the mini roundabout keep right and after just a few paces you'll see a cannon and stone cross war memorial set on a small green ahead of you. The cannon commemorates Queen Victoria's visit to the area in 1853 when she reviewed the troops on Chobham Common before their departure to the Crimean War.

Immediately before the cannon, turn right down the gravel drive passing an antiques centre on the right. Keep straight ahead on the gravel drive which becomes a grassy ride between the cricket pitch on the right and a car park on the left. (The car park has a public toilet should you need to use this).

You'll find this and many more walks at iFootpath.com. All iFootpath walks are available to download on the iFootpath iPhone App, allowing you to follow your real-time progress on the live satellite map as you are walking (no more getting lost!). You can also add your own comments, ratings and photos to each walk. If you notice any changes required to this walk please contact us at walks@ifootpath.com



As the car park on the left ends, take the first path on the left following the bottom edge of the car park. As you approach the trees you'll reach a fork, keep left and after just a few paces you'll reach a waymark post with the Mill Bourne stream directly ahead.

1 → 2 Mill Bourne to Willow Farm

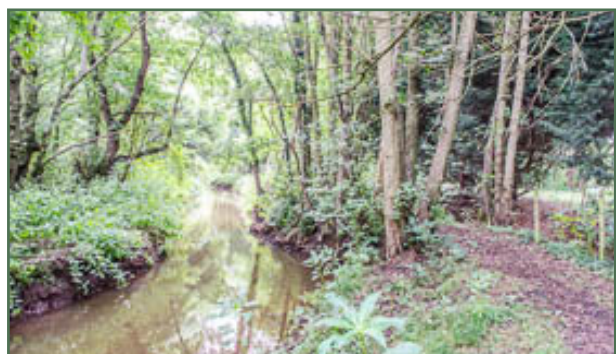


Turn right and follow the footpath with the Mill Bourne running on the left.

The beginning of this waterway rises in Lightwater and is joined by another tributary in west Chobham to become the Mill Bourne. From here it flows on to reach the southern branch of the River Bourne near Woking. In 2006 much of the Chobham area was flooded when heavy rain led to the Mill Bourne bursting its banks. Keep your eyes peeled for kingfishers which are occasionally seen along this stretch.

Follow the riverside path for some distance, keeping left at any forks to stay on the path closest to the water. Soon you will be following the left hand edge of several open grass water meadows. Keep ahead through a small section of scrub with fenced horse paddocks to the right. Cross a green metal stile (marked VE 1995) to reach a crossroads with the tarmac access lane for Willow Farm.

2 → 3 Willow Farm to Fairbourne Manor



Cross over the access lane and go straight ahead signed to Emmett's Mill. Follow this wide track winding along, with the Mill Bourne still immediately on the left. Cross another green metal stile and follow the river edge path passing more fenced rough horse paddocks.

Pass through a make-shift staggered barrier and follow the path through a pretty section of trees. If you look through the trees to the right you'll see a white neo-classical style residence behind a large ornamental lake with a fountain. If you look ahead, further downstream, you'll see Emmett's Mill.

This mill was established by Chertsey Abbey and its name originates from 1572 when Richard Emmett was in control. The existing three storey mill building was erected in 1701. Milling

ceased in the 1890s and the machinery was removed when it was converted into a private residence. The frame of the 10 feet wide waterwheel still survives.

Before you reach Emmett's Mill the path swings right. Follow it over two footbridges (ahead then left) to reach a wide grass verge alongside the main gated entrance to Fairbourne Manor.

3 → 4 Fairbourne Manor to Sandpit Hall Road



Turn right along the grass verge passing in front of Fairbourne Manor (the white property you saw from the back earlier). As the green metal boundary fence of the property ends, fork right through a kissing gate (slightly hidden under trees) signed as a footpath.

Walk ahead keeping close to the paddock fence on the right. Pass through the small wooden gate ahead and then cross the stile directly opposite. Keep ahead passing the stables and horse menage to the left, still keeping close to the right hand fence. Cross the stile over a double fence and then further along pass through a metal kissing gate to join a narrow footpath alongside tall conifers.

The path finally emerges through a metal kissing gate to a pasture (likely to be holding sheep and cattle). Keep ahead close to the hedge on the right and cross over the stile at the far side. Keep ahead again following the right hand hedge and cross the next stile to reach a T-junction with a road with a pretty thatched cottage opposite.

4 → 5 Sandpit Hall Road to Broadford Lane

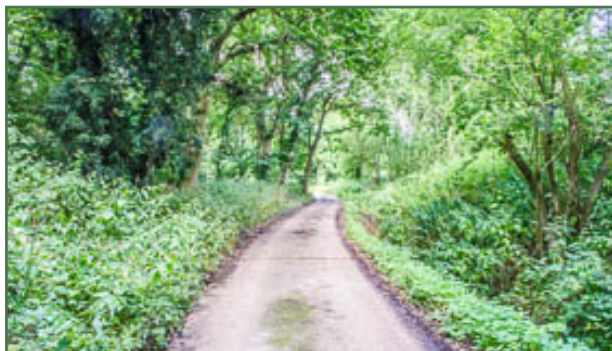


Turn right along the main road, passing the 17th century Sandpit Hall on the right and more pretty thatched cottages on the left. Follow the road for some distance taking care of any traffic. Ignore any paths off left and right and at the end of the road you'll reach a T-junction with Station Road.

Move on to the grass triangle and then cross Station Road with care to take the gravel drive opposite signed as a public bridleway

to St Nicholas and The Sidings. Pass between a few properties and keep ahead onto the narrow path through trees. Cross a large wooden footbridge and you'll emerge to a T-junction with Broadford Lane, with water treatment works over to the left.

5 → 6 Broadford Lane to End



Turn right along Broadford Lane, a concrete track, and follow this for some distance. You'll pass Broadford Farm on the right and then emerge to a T-junction with Castle Grove Road.

Turn right along the pavement heading back towards Chobham. Cross a footbridge and, before you reach the mini roundabout, cross over to the left hand side of the road. Keep straight ahead past the mini roundabout onto Chobham High Street. Chobham has a remarkably long history with evidence of human occupation

from pre-historic times. One of its many claims to fame is that it is the birth place of singer and songwriter Peter Gabriel.

Cross over the zebra crossing and you will see St Lawrence Church in front of you (dating from about 1080). The present tower was added about 1400 and the clock, which has four faces, was added in 1900.

Continue further up the High Street for just a few yards to reach the White Hart for some well deserved hospitality.

Disclaimer

This walking route was walked and checked at the time of writing. We have taken care to make sure all our walks are safe for walkers of a reasonable level of experience and fitness. However, like all outdoor activities, walking carries a degree of risk and we accept no responsibility for any loss or damage to personal effects, personal accident, injury or public liability whilst following this walk. We cannot be held responsible for any inaccuracies that result from changes to the routes that occur over time. Please let us know of any changes to the routes so that we can correct the information.

Walking Safety

For your safety and comfort we recommend that you take the following with you on your walk: bottled water, snacks, a waterproof jacket, waterproof/sturdy boots, a woolly hat and fleece (in winter and cold weather), a fully-charged mobile phone, a whistle, a compass and an Ordnance Survey map of the area. Check the weather forecast before you leave, carry appropriate clothing and do not set out in fog or mist as these conditions can seriously affect your ability to navigate the route. Take particular care on cliff/mountain paths where steep drops can present a particular hazard. Some routes include sections along roads – take care to avoid any traffic at these points. Around farmland take care with children and dogs, particularly around machinery and livestock. If you are walking on the coast make sure you check the tide times before you set out.

